

Bx42 chipper manual



Actual Colors May Vary

File Name: Bx42 chipper manual.pdf

Size: 4178 KB

Type: PDF, ePub, eBook

Category: Book

Uploaded: 21 May 2019, 14:48 PM

Rating: 4.6/5 from 805 votes.

Download Now!

Please check the box below to proceed.



I'm not a robot



reCAPTCHA
Privacy - Terms

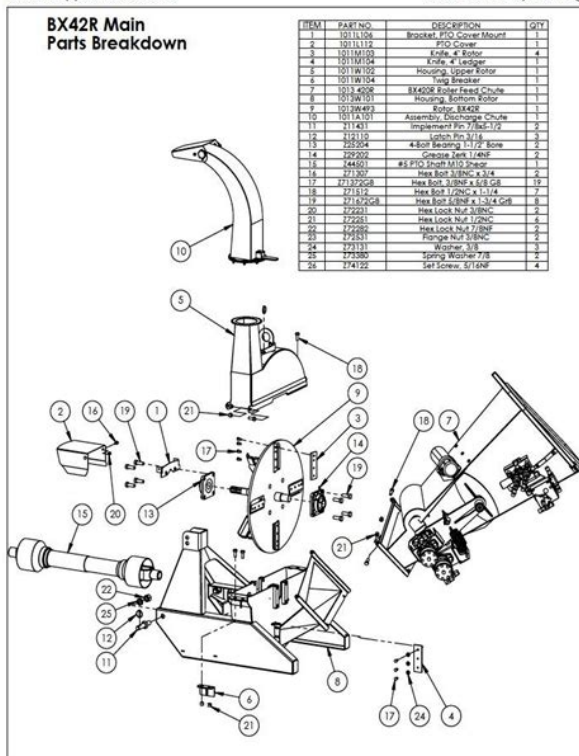
Book Descriptions:

Bx42 chipper manual



Detailing safety, operation and maintenance. Detailing safety, operation and maintenance. Detailing safety, operation and maintenance. Detailing safety, operation and maintenance. Detailing safety, operation and maintenance. It is intended to further explain features and specifications which are outside the scope of the product catalogue. The Spec Book incorporates answers to the frequently asked questions. The shredder will clog risking equipment damage. The same applies to leaves as well. We build strictly to order. All units are crated and shipped out once complete. Therefore, we would not have one here for you to see. We recommend that you visit your nearest dealer. Please see our online dealer locator. Please locate your nearest dealer by using the DEALER LOCATOR on our website. Shredders will also work with leaves and vines. We have not tested them on other materials, nor do we recommend doing so. A small chipper will not be able to handle the forces put on it by a large tractor. A large chipper will not work efficiently with a small tractor. The hydraulic hoses for the motor feature a checkvalve protected parallel circuit which allows the rotor and motor to wind down together once the hydraulic power is turned off. This prevents damage to the motor. The owner is responsible for registering the engine with the appropriate engine manufacturer or distributor, as outlined in the Engine Owner's Manual which accompanied your Wallenstein product. All warranty work must be done by one of the engine manufacturer's approved servicing dealers. Once the rotor is up to the programmed start speed, the electronic control module allows forward feed when the feed control handle is placed in the "forward" position. Once the restart speed has been reached, forward feed resumes. The system allows reverse as long as there is electrical power to shift the solenoid and hydraulic flow. The rotor does not have to be turning for reverse to work. Some assembly is required. http://glenflorafarms.com/images/editor_images/dell-printer-manual-v715w.xml

- **bx42 chipper manual, bx42 chipper parts, bx42 wood chipper manual, wallenstein bx42 wood chipper manual, bx42 chipper manual, bx42 chipper manual, bx42 chipper manual.**



Always check fluids on models which contain fluids before use. Therefore, our enginepowered equipment is designed to run most efficiently at the same RPM. Running enginepowered equipment at less than full throttle is counterproductive. Engines usually require a moment to warm up enough to accept full throttle and load. The feed hoppers, the mountings to the rotor housing, the rotor housing themselves and the rotors are all different. It is not possible to add roller feed to a selffeed chipper. They are easier to transport around a property and through a bushlot. Their disadvantage is that they require a tractor to operate them. The larger chips they produce are better for pathways, decorative use or simply blowing into a ditch. However, they can be clogged by small green brush. The fine fiber they produce is better for garden bedding material, and so on. However, they cannot process larger diameter material. This allows a smaller engine to be used. It also removes the necessity of having someone at the feed control bar at all times. Some consider it a disadvantage that the hydraulic system requires constant flow of fluid from the tractor, or from our optional PTO pump kits. The electronics also require 13.5 volts and 1.5 amps from the electrical system of the tractor on a 3point hitch model. Some consider it a disadvantage that the hydraulic system requires constant flow of fluid from the tractor, or from our optional PTO pump kit on a 3point hitch model. The species of wood, grain, moisture content, size of wood, feed rate, rotor RPM, knife condition, and clearance between the rotor knives and the ledger knife are all factors. Specifics such as viscosity, vary with oil manufacturer and climate. Please see your engine owner's manual for specifications and the use of synthetic oils. A maximum of 10% ethanol E10 is also allowed. Always keep the fuel tank clean. Always refill the fuel tank from a clean container using fresh fuel from a reputable, high volume retailer. <http://www.hgb.se/filer/dell-printer-model-922-manual.xml>



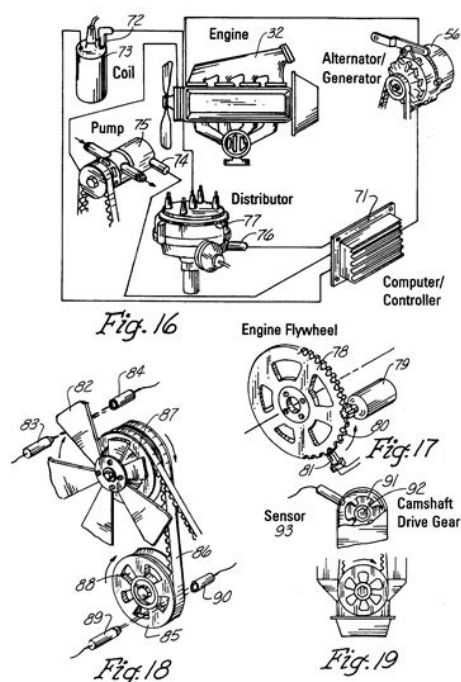
Actual Colors May Vary

Please see your engine owner's manual for specifications. The drive pulley mounts onto the PTO input shaft of the rotor with the key and taper bushing. The driven pulley mounts to the pump shaft at the tank. The tank mounts to the chipper frame using slotted holes for belt tension adjustment. It is a chip and twig breaker that bolts across the exit for the discharge chute from inside the rotor housing. It breaks up the larger chips and twigs until they are small enough to pass through. This allows the chips to dry faster and burn more consistently. These knives work with a stationary knife mounted to the housing, to chip small pieces off the face of the log. The flail knives create fine fibrous mulch. On the chipper shredders, the chipper section is fed through the end and the shredder is fed through the top. These models have no mechanism to feed wood into the blades. The feed hoppers are angled up to allow gravity and the chipping action to feed wood. These models have feed rollers powered by hydraulic motors to pull wood in and push it into the blades. However, the tractor will start bogging down or even stalling once the log size reaches about 75% of capacity unless fed very slowly. By changing screens the operator can change the final size of the shredded material. However, most of the engine models we use are available with one. Honda mentions them in the owner's manuals because the manuals cover all versions of each engine. These engines can be mounted many different ways. Honda has provided two filler holes and two drain plugs to ensure that one of each is accessible. The black cap is a plug. The GC engines only have one plug. Your Wallenstein owner's manual contains instructions on how to measure and cut your shaft to the correct length. However, please note that the chipper feed rollers should not be left in the STOP position for more than five minutes at a time on a closed center system.

If the work cycle requires a stop of more than five minutes on a closed center tractor, the tractor should be turned off. Hydraulic flow requirements should be observed for either type of system. Too much flow will always generate excess heat in any hydraulic system. The PTO shaft and the hydraulic hoses may not be long enough, depending upon the exact quickhitch. Wallenstein does not offer shaft or hose options. John Deere iMatch quickhitches may require bushings for the pins, available from your John Deere dealer. Because of our careful design process, we cannot custom build equipment. Our industry leading warranty policy demonstrates that Wallenstein is the best choice for quality and reliability. Should a warranty situation arise, the repair will be performed by the Wallenstein dealer from which you purchased your unit. All Rights Reserved. This machine also has twig breaker paddles on oversized rotors so that wood and twigs won't clog the blades or shaft. This wood chipper can process pieces of wood up to 4" in diameter, creating manageable chips and pellets and eliminating roadblocks in your work. This feature eliminates the need for additional attachments and motors, making any job you take on that much easier. Our wood chipper also is equipped with hinges on the detachable feed chute for compact storage and transport. It also comes

with a PTO shaft. **ADJUSTABLE EXIT CHUTE** The exit chutes on the Titan BX42 PTO 4" x 10" Wood Chippers are fully adjustable. This feature allows you to direct the path of the chips as they exit the machine after processing. This makes your operation and cleanup processes quicker, easier, and safer than it would be otherwise. **RECOMMENDED FOR 40HP TRACTORS** This selffeeding wood chipper is extremely versatile and can be used with most tractors up to 40HP. This means that you can operate it with most models by major brands. This wood chipper is easy to mount and accepts entire trees. The entire attachment weighs 431 pounds.

U.S. Patent Jan. 18, 2000 Sheet 6 of 11 6,014,996



<http://www.drupalitalia.org/node/77628>

ABOUT TITAN At Titan, our number one goal is to provide excellent customer service to our customers. We also pride ourselves in our excellent communication capabilities. We are always willing to answer questions if you need to contact us. Our fulltime teams work around the clock to make sure you get highquality products and service for a walletfriendly price. When conducting a tree removal operation due to windfall, rot, or landscaping preferences, processing excess timber can be a challenge. With the Titan BX42 PTO 4" x 10" Wood Chipper, you can handle this step in the process with ease. This heavyduty wood chipper accepts entire trees in pieces up to 4" in diameter. It integrates with the 3point hitch system and PTO on your tractor for simple transport, operation, and storage. Additionally, this chipper has a hinged feed chute that can be removed to make it more compact when not in use. This chipper features a fully adjustable exit chute. Since you can direct the path of the chips as they exit the machine, the operation of this machine is safer, easier, and cleaner. You'll find yourself with less of a mess at the cleanup stage. The blades on the rotor work to eliminate wood that can block or clog the chipper. This machine is recommended for use with tractors up to 40HP and works with most models from major brands It doesn't matter if you need to process trees, brush, or foliage for disposal, break them down for fire kindling, or produce wood chips for landscape and gardening filler. This wood chipper helps you get the job done with ease,

leaving no work unfinished. At Titan, our first priority is to give our customers the service they deserve. We've also made communication a key concept. If you have questions or concerns along the way, we want to know so that we can help you have the best possible experience. You can trust our team of experts because they work around the clock to ensure your work can go on without a hitch.

<http://acktivities.com/images/bowflex-pdf-manual.pdf>



Order from Titan when you have to replace lawn mower, tractor, or other machine parts. This feature eliminates the need for additional attachments and motors, making any job you take on that much easier. Wooden Case or Iron Pallet. 2. The whole set of machines size are large as normal, so we will use Waterproof materials to pack all of them. The motor, gear box or other easily damaged parts, we will put them into box. We have a professional shipping department, they will try their best to save your container quantity. Machine videos in YOUTUBE LEFA company video EFG FLAIL MOWERS EFGL SIDE MOWERS FM FINISHING MOWERS TM TOPPER MOWERS RT ROTARY TILLERS AP90 POTATO HARVESTER LFPT32 POTATO PLANTER LFPT32W2 ROWS POTATO PLANTER Wood chipper BRH80 wood chipper BX42 HAY BALER 4U130 potato harvester FAQ Q1. How to buy 3 point rotary tiller. AIn general, we can ship the goods within 3045 days after receiving your payment. Of course, it also depends on your quantity. Q3. How can I get to your factory to buy tractor cultivator. AWe are located in Changzhou, only one hours distance to Shanghai or Nanjing. AIn general, we have some stock, while if you need a bulk order, we still need time to produce it. Of course, we will inform all details you before your payment. Q5 Whats your main products. A Our products are covered almost all farm machines and Japanese tractors parts, we can meet your any demands. Q6. What is your terms of payment. Wooden Case or Iron Pallet. 2. The whole set of machines size are large as normal, so we will use Waterproof materials to pack all of them. A Our products are covered almost all farm machines and Japanese tractors parts, we can meet your any demands. Q6. What is your terms of payment. Please update your browser. We suggest using Google Chrome or Mozilla Firefox. This provides more consistent chip size and allows you to propel the chips further. 5. Adjustable Chute Easily control where you want the chips with the double adjustable Exit Chute.

<https://www.ortorehab.se/images/bowflex-power-pro-manual-pdf-download.pdf>



Or depend on customers requirements. Related Products Wood Chipper use 15hp gasoline 91.8% Response Rate Wood chipper use diesel engine 91.8% Response Rate Related machines for making wood pellet 91.8% Response Rate. It shreds all kinds of woods up to 4 inches in thickness. The BX42S includes the PTO Shaft with safety shear bolt and connects to your CAT I 3 Point Hitch. It comes with the upper and lower pins, and additional bushings for Cat II mounting are available. The direct PTO drive system turns the wellbalanced 37kg 82 lb. rotor with its four 8 in. The fastturning knife rotor is cutting the wood about 35 times per second, pulling in the material. The counter knife setting creates shredded material from in. to 1 in. size. The high rotor speed and the specially designed rotor winglets create the air suction which throws out the shredded material and makes wood jams virtually impossible. The heavy halfinch thick rotor disc is equipped with branch breakers processing very thin branches as well. The rotor is directly driven by the PTO shaft which is included in the shipment. The discharge funnel is located at 62in. The shredded material can be thrown up to 20 ft. Check out our blog post Self Feed or Hydraulic Which Wood Chipper is Right for Me. The rotor cover can be opened by removing only one screw to get access to the knives. For easy transportation, the input chute can be lifted up and secured by a pin. Victory Tractor Implements offers the very best value in a heavyduty tractor driven wood chippers, supported with a maximum in personalized customer service. ATTENTION Partially assembled machines do not contain any fuel, oil, or other fluids or grease needed for operation. BEFORE USING THE MACHINE please carefully read the user's manual. Technical Data BX42S Dimensions HxWxD 77 x 40 x 43 in. Feeding system selffeeding Height of output funnel 62 in.

Victory Tractor offers a variety of chippers to suit your needs BX72R Hydraulic Wood Chipper Proud supporters of the FFA ATTENTION Partially assembled machines do not contain any fuel, oil, or other fluids or grease needed for operation. Technical Data BX42M Dimensions HxWxD 77 x 40 x 43 in. Feeding system selffeeding Height of output funnel 62 in. Victory Tractor offers a variety of chippers to suit your needs Reviews There are no reviews yet. Be the first to review "BX42S PTO Wood Chipper" Cancel reply Your email address will not be published. All Rights Reserved. The contents of this website are protected by Canadian and international copyright and other intellectual property laws. Subject to your compliance with the website Terms of Use, you are granted a limited, personal, nonexclusive license to view, store, process, download and print content for personal, noncommercial use. All other rights are expressly reserved. No rights are granted in any trademarks owned by Glacier FarmMedia, its affiliates or any third party. Permission to copy any content on this website must be obtained from the copyright owner. This product is equal to the same kind of

foreign products in foreign countries, and it has reached the advanced level in China. Pictures
Specification Model BX42S BX42R BX62R BX92R Dia of knife plade 630mm 630mm 740mm 940mm
Thickness of knife plate 18mm 18mm 25mm 35mm Weight of knife plate 50kg 50kg 80kg 170kg No.
We have a professional shipping department, they will try their best to save your container quantity.
Updated daily.Updated daily.A wide variety of wood chipper bx42 options are available to you, such
as diesel, gasoline. You can also choose from none, egypt, and indonesia wood chipper bx42, as well
as from new wood chipper bx42, and whether wood chipper bx42 is farms, retail, or manufacturing
plant. There are 73 suppliers who sells wood chipper bx42 on Alibaba.com, mainly located in Asia.

<http://www.fliesen-brill.de/wp-content/plugins/formcraft/file-upload/server/content/files/1626d8d9c611d0---3m-x64-projector-manual.pdf>

The top countries of supplier is China, from which the percentage of wood chipper bx42 supply is 100% respectively. To calculate the overall star rating and percentage breakdown by star, we don't use a simple average. Instead, our system considers things like how recent a review is and if the reviewer bought the item on Amazon. It also analyzes reviews to verify trustworthiness. See All Buying Options Add to Wish List Disabling it will result in some disabled or missing features. You can still see all customer reviews for the product. Grease it before you run, there was practically none in the bearings. I spent a few hundred more elsewhere. Reviewed in the United States on July 22, 2017 It arrived scraped up I know its tough to ship something like this, but when the metal crate wrapped around it is rubbing up against the pretty red paint, its bound to happen. Some thick cardboard in between could make a new chipper appear new when it arrived. Mine had some streaks on the flywheel like it was used, but appeared to be in new condition probably just tested at the manufacturer. There were also a bunch of metal shavings gathered around the bearings on the shaft side.This design kept me from doing anything very large at all. STUFF STUCK IN THE LOOSE FLYWHEEL COVER Mine came with a bad bolt on the flywheel cover. The cover itself wouldnt stay tightened down and the nut was welded into place. I used an impact wrench to tighten down the bold as far as I could, but it still left about an inch of play. Stuff was jamming up into the cover and getting stuck because of the extra space. Especially when things dont keep moving. I spent a lot of time and energy pulling out long branches and jamming them back and forth to try to get them to catch and start chipping again. Stiff branches worked OK. FORUMS LED ME TO THIS RECOMMENDATION WC8N Medium Duty PTO Wood Chipper Theres another one not currently on amazon, direct from the manufacturer. Its the WM8M and is a little beefier.

<http://www.AUTODESGUACECOIN.COM/ckfinder/userfiles/files/91-nissan-hardbody-service-manual.pdf>

Both models unlike this Titan version have a feeding wheel that keeps materials going and pulls things in automatically. Tractor forums rave about this model. Mine is a week away and I cant wait. Spend about 5 bills extra and get the Woodmaxx. Please try again later. Shawn B. 5.0 out of 5 stars I was worried about the shear pin, but I can replace with a slip clutch later. Grease it before you run, there was practically none in the bearings.Please try again later. Please try again later. ERIC 5.0 out of 5 stars Its behind a LB1914 KIOTI. Approx 16hp pto. At first I ran it at 540rpm but it cloggedup 3 times from not enough rpm to exhaust the chips I guess. Engine is a 3cyl diesel and it eats brush and limbs quite well with this setup. Chipper arrived in excellent shape also. ERIC. I have used this chipper an entire season now and am still impressed with it, works great, may need to sharpen blades this summer but it eats everything i throw at it.Please try again later. Please try again later. Maddog 5.0 out of 5 stars The chipper has worked very well for all the variety of sizes and shapes of limbs that we have run through it. I found that the 28 HP of the 8N would produce the best results with 800 900 PTO RPM. The gravity feed seems to work well too. The angle of the feed box and the somewhat rectangular 4X10 opening really helps get the bent or odd shaped limbs through the chipper smoothly. I think this chipper was a good match to the performance of my Ford tractor. I am

happy with my purchase. Please try again later. Please try again later. Jesse 5.0 out of 5 stars Delivered promptly, and easy open steel crate. Simple to put together, I was up and running in under an hour by myself. Here's the thing, there is a learning curve with this, and probably any chipper. You do better chipping green limbs. Dry stuff is harder to chip and you get more clogging and stoppages. Learn how to open and clear it out is all I can say.

I modified the case closure a bit to have a clevis pin instead of a screw because I have to stop and clean it out a lot when I'm chipping dry branches. I'm running this off a 69 Ford 4000 diesel which I believe is about 4045 HP more or less. I've chipped 3 inch hardwood with no problem, and 4 inch pine. That said, I have locked it down with a handful of small dry branches. Like I said, it takes some time to figure it out, and I'm still learning. All in all, I think it is a great product, well made, and up to the task if you take your time and figure out how to use it. Please try again later. Please try again later. M. Gainey 5.0 out of 5 stars It just makes connection and disconnection of the chipper sooooo much easier. Please try again later. Please try again later. Joseph T. Sowder 5.0 out of 5 stars No instructions included for putting it together, but it is pretty intuitive. Quick connect PTO shaft and 3 point hitch. So far, used 2 days for about 8 hr a day, machine worked great. Makes fast work of small trees. Attached to a Kubota L245, running the PTO at 750rpm and engine about 2000rpm. Chipping scrub oak, pine, cherry laurel, magnolia. I will probably run the PTO at 1,000 and see if it does better. All in all, very happy with this chipper. It's going to save me a lot of time and effort in the end. After about 4 months of use, still very pleased. Makes quick work of small trees. Pretty indispensable if you are clearing property on your own. Please try again later. Please try again later. Josh 5.0 out of 5 stars I really like this chipper. So, to be clear, this is the only wood chipper I've ever used, but I am very pleased. The shipping was very fast. It came several days before the earliest estimated arrival date. It also comes packed in this welded angle iron crate that did a great job protecting it in transit. I don't think it had a scratch on it when it arrived. The assembly was super easy and miniscule. I hooked it up to my tractor and fired it up.

I'm using a 35 HP Yanmar tractor, not sure the HP on the PTO. I ran it at about 800 RPM and went to work chipping mesquite. I threw in pieces mostly 2.5 inch and smaller, with a couple 3 inch pieces mixed in. The chipper didn't care if it was dry or green, I did both. It spit out a pile of beautiful wood chips. Not sure where all the thorns went. I'm sure I'll find them later in my feet as I walk on this stuff. I'll update this post after I use it more, and I'll try to include a video and some pictures. Please try again later. Please try again later. WESIII 5.0 out of 5 stars The chipper itself is SOLID. It was easy to assemble with little effort. I'm using it with a Massey Ferguson 231s which is about 42hp at the PTO. Seems to like 1700 RPM best. Overall I am impressed. If anyone needs the manual, parts list, etc this chipper seems to be a clone of the Wallenstein chipper. Those manuals are easy to find online. Please try again later. Please try again later. KPL 2.0 out of 5 stars I spent a few hundred more elsewhere. Some thick cardboard in between could make a new chipper appear new when it arrived. Stiff branches worked OK. It's the WM8M and is a little beefier. Spend about 5 bills extra and get the Woodmaxx. Please try again later. Please try again later. Dean Paris 5.0 out of 5 stars Please try again later. Please try again later. Personal protection equipment including China Manual Shredder Drum Wood Shredder Chipper BX42, Find details about China Manual Shredder, Sell Drum Wood Chipper from Manual Shredder TS wood shredder type GM10, 150, 170, 190, 250, 327, 350, 431, 450, 532, 550, Regular inspections according to the operating manual are to be met! 3012 products Alibaba.com offers 3012 wood chipper manual products. About 88% of these 3 point hitch BX42 manual feed wood chipper with shearbolt pto. WALLENSTEIN by EMB Mfg. May 2011. Page 6. BX42S Chipper Parts Manual. 6. 8. 11. 7. 1. 5. 10. 3. 2. 9. 4. BX42 DISCHARGE. CHUTE PARTS. BREAKDOWN.

This manual covers the Wallenstein 3 Point Hitch Wood Chipper BX42 Use the Table sitting in the tractor driver's seat and facing in the direction of travel. BX42 21 Apr 2017. Forest Mowers. The

speed of the feed rollers can be controlled in order to align the feed rate to the diameter for the blades. Smaller diameters may be discharged faster than larger diameter. In event of a blockage you change the feed in the reverse mode. The feeder can also be disabled on this mode. This is powered by the tractor hydraulics; this requires a pressure flow and a separate return or double acting controller. The PTO is on one side of a shear pin installed, which is used for security as a breaking point for blockages or overloads. You can use any tractor over 30HP. The PTO speed must be a range of between 540 750 RPM. The large diameter rotor has a faster tip speed for improved chipping action and the heavy gauge steel keeps your momentum to power through the tuff stuff. Blades The reversible blades are precision cut high grade hardened tool steel. Hardening increase performance and extends life of the cutting edge, maximizing the performance of the chipper. Air Vents Blowing force is maximized with air intake vents on the side of the chipper. Air enters through the vents and powers the chips out the chute up to 20 feet. Twig Breaker Blower Paddles Behind the blades are blower paddles with intergrated twig breakers designed for greater output force and smaller chips exiting the machine. This provides more consistent chip size and allows you to propel the chips further. Adjustable Chute Easily control where you want the chips with the double adjustable exit chute. The chute swivels 300 degrees and the top deflector adjusts the distance. SelfFeeding Hopper The selffeed hopper is designed to angle the brush against the rotor and blades, pulling the branches into the chipper. Feed hopper fold for easy storage and transport. Model FHBX42 Maximum Feed Capacity 4" x 10" material Min.

Operation PTO HP 15 Horsepower Max.Regrettably parts could move without packing therebetween resulting in many scratched paint areas. Presumably over time wear will result in eventual clearance. This will probably result in greater cutting edge wear and somewhat uneven chip production. Nonetheless the chipper works pretty well once the PTO link with its difficult lock is wrestled into place. Overall a reasonable value which just falls short of a superb value. Also, both the input and output shoots are hinged to allow access and clearance but, both require wrenches to open instead of a welded nut and knob for convenient in field access. Good hardware. PTO shaft was to long for my tractor setup. Had to cut off 4" but, was easy to do. Had it hooked to a 20 hp tractor. Chipped 2 truck loads of chips. Only had one clogging in the output of chips. Need to adjust the limb breaking blade so small limbs are broken in smaller pieces.

<http://www.drupalitalia.org/node/77630>